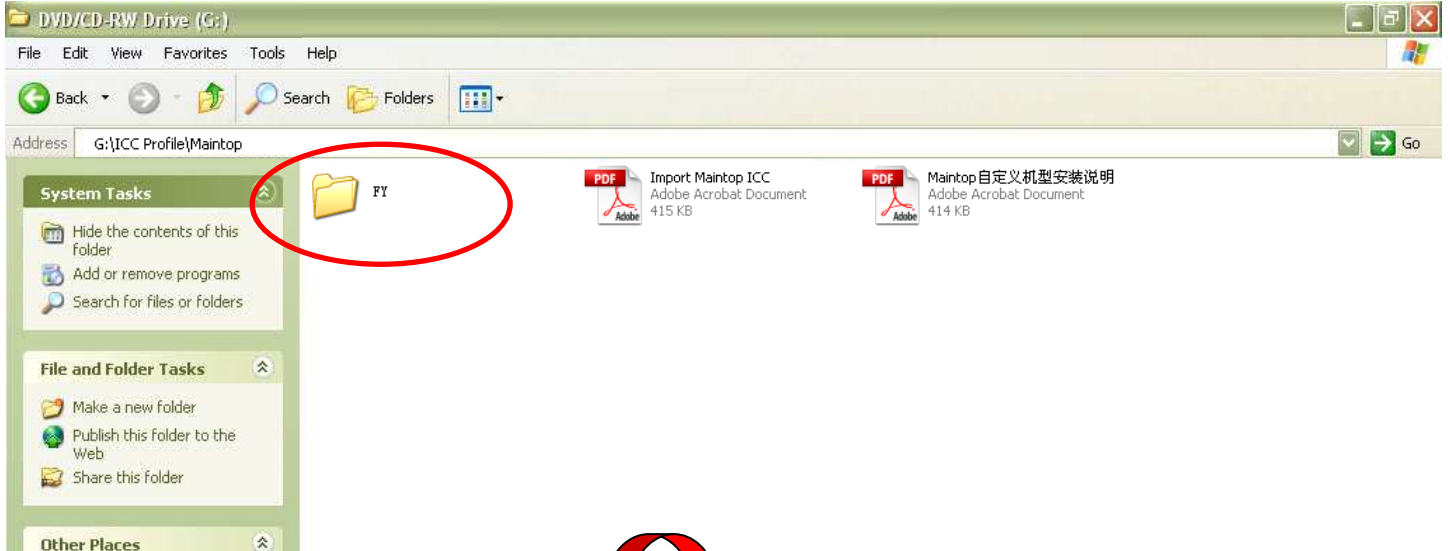
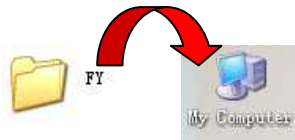


Import MainTop ICC

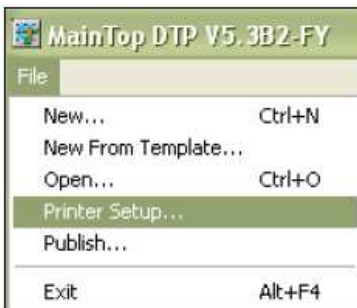
1. Install MainTop Rip software
2. Open install disc, open **ICC Profile**\MainTop, find **FY** folder



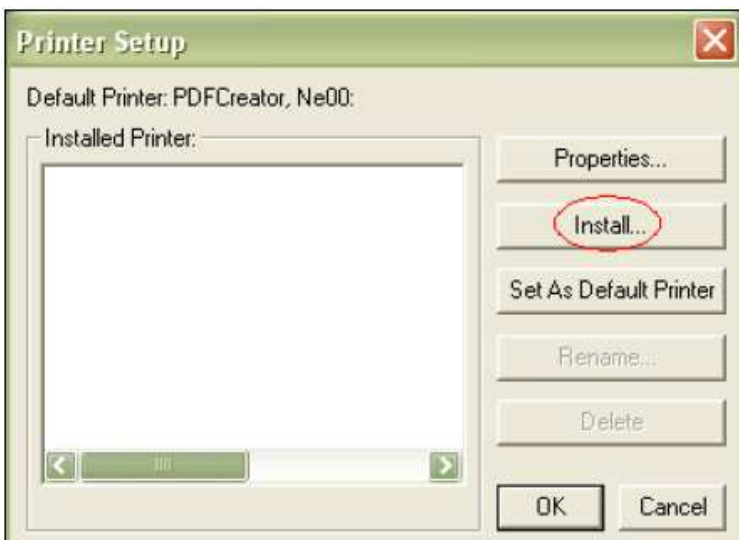
3. Copy this folder to your computer



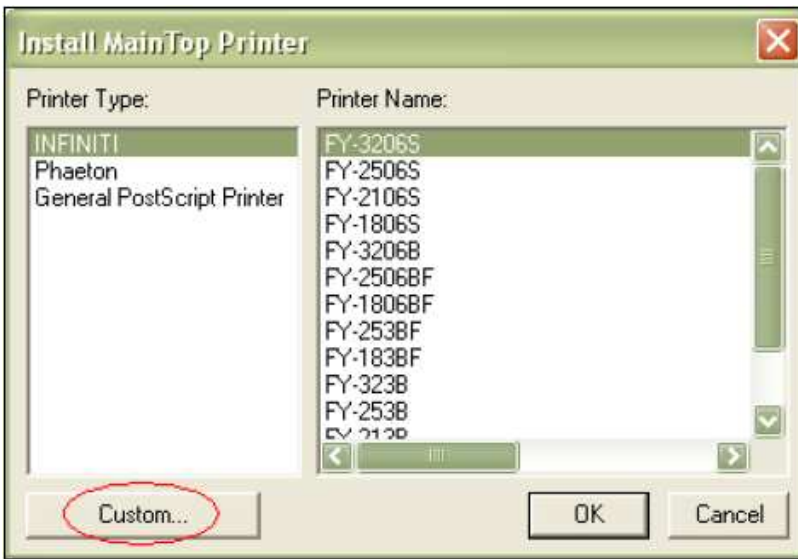
4. Open MainTop Rip software, select File\Printer Setup



Select **Install**



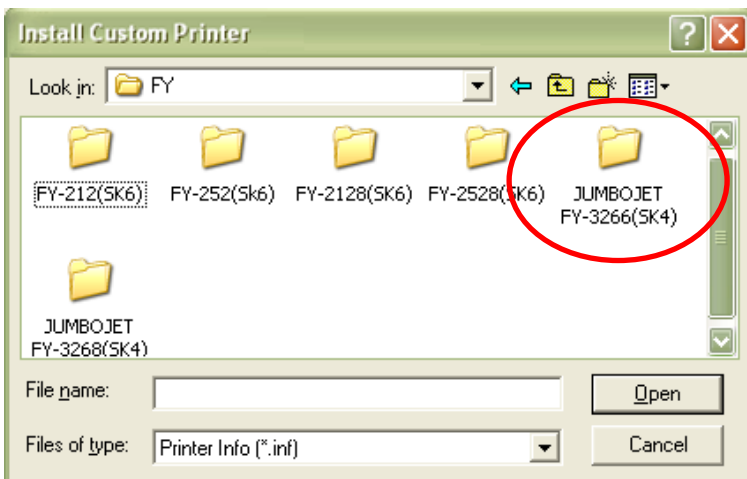
5. At install MainTop Printer, click **Custom** (Here will take JUMBOJET FY-3266 as example)



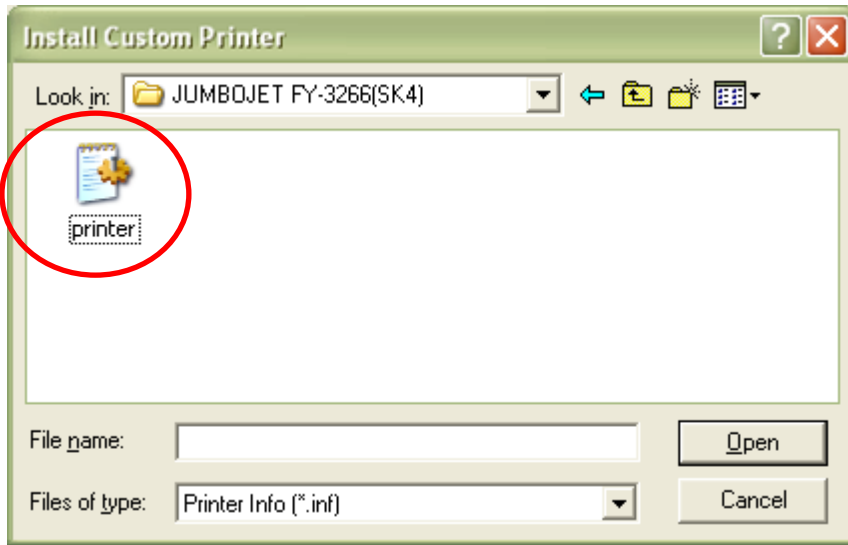
6. Find the FY folder which just copied to your computer



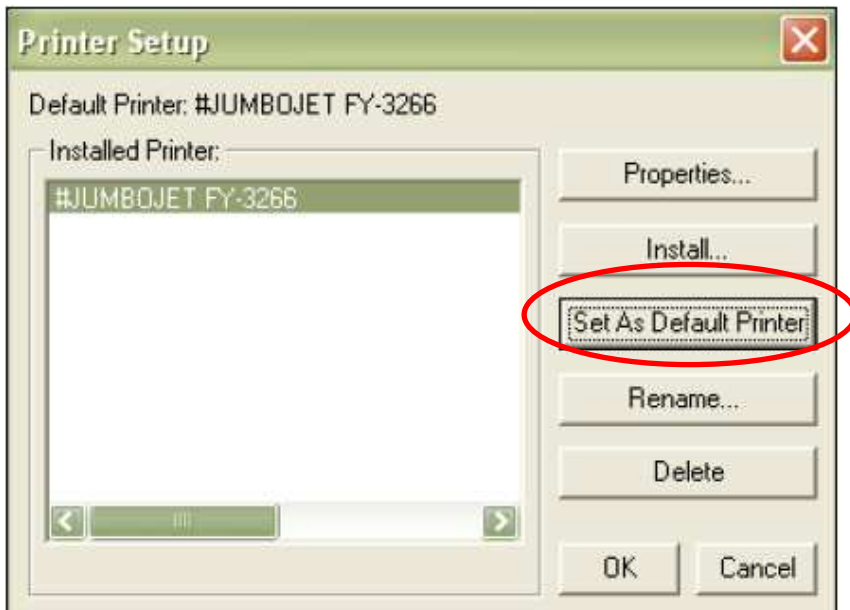
Open JUMBOJET FY-3266(SK4)



7. Select printer.inf, click open



8. Click Set As Default Printer



9. Finish import ICC.